

# *Dexter*

QUICKSTART

999  
JAZZMUTANT



# TABLE OF CONTENTS

|  |           |
|--|-----------|
| <b>I. DEXTER SOFTWARE INSTALLATION</b>     | <b>03</b> |
| a) On the Mac                              | 03        |
| b) On the PC                               | 04        |
| <b>II. HOOKING DEXTER UP</b>               | <b>05</b> |
| <b>III. SETTING UP YOUR DAW</b>            | <b>06</b> |
| a) Logic Pro 7.2 (Mac)                     | 06        |
| b) Cubase 4 (Mac and PC) and Nuendo 3 (PC) | 09        |
| c) Sonar (PC)                              | 10        |
| <b>IV. GET THEM TO TALK !</b>              | <b>11</b> |
| <b>V. TOUCHING DEXTER</b>                  | <b>12</b> |



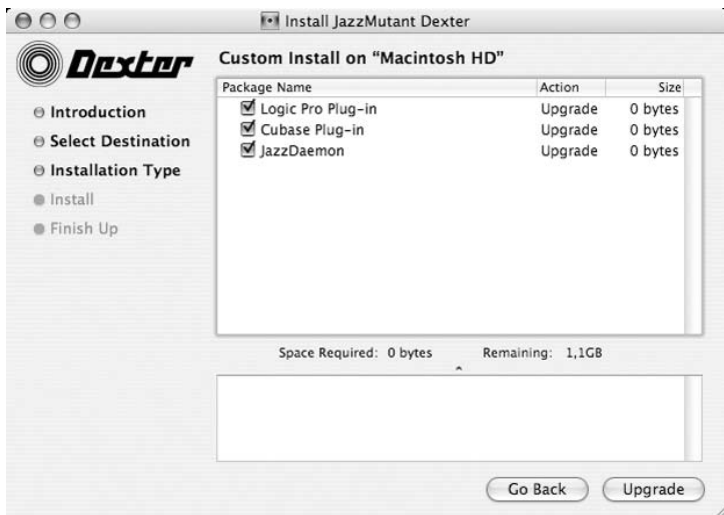
THANK YOU FOR CHOOSING DEXTER AS YOUR DAW CONTROLLER ! THIS GUIDE WILL GET YOU AND YOUR DEXTER ALL PREPARED AND READY TO GET IN CONTROL. ONCE YOU'RE DONE, REFER TO THE DEXTER MANUAL ON THE BUNDLED CD-ROM FOR A WALKTHROUGH OF DEXTER'S USER INTERFACE.

## I. DEXTER SOFTWARE INSTALLATION

Dexter relies on several pieces of software to integrate with your Digital Audio Workstation. Before you start using Dexter, you need to install specially developed plug-ins at the heart of your DAW. Additionally, support for Apple Logic Pro on the Mac is made possible via an extra application called the JazzDaemon. Read on to install the necessary Dexter software !

### a) On the Mac

Double click the Dexter Installer icon located on the bundled CD. Choose the Volume you wish to install on : this is the one that contains your Applications folder and all the DAWs you wish to control. You may now select the components to be installed.

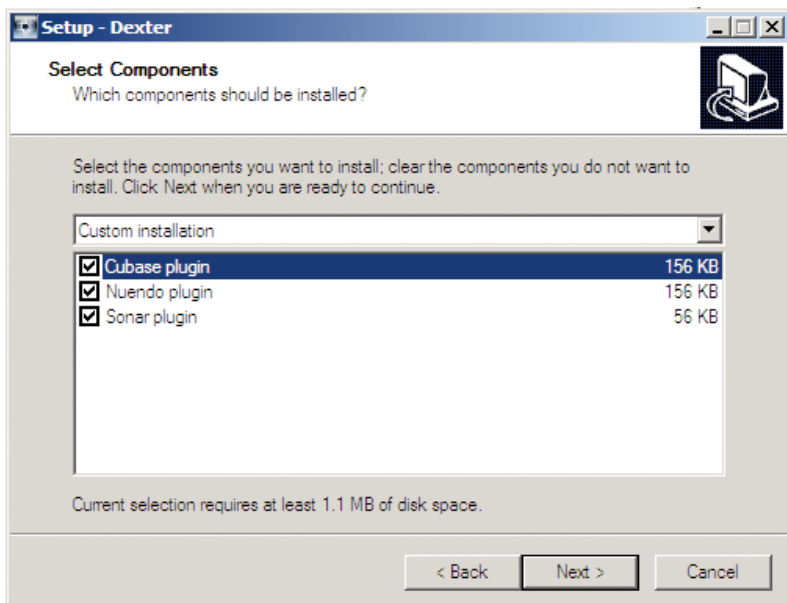


For Cubase compatibility, select **Cubase Plug-in**.

For Logic compatibility, select both **Logic Pro Plug-in** and **JazzDaemon**. Click on **Install** or **Upgrade**. The Installer will prompt you for an administrator password, and will then install all the relevant files.

## b) On the PC

Double click the Dexter Installer icon located on the bundled CD, and click Next after the welcome screen. You may now select the components you wish to install.



The Installer will ask you to locate the directories where the plug-ins for each application should be installed.

For Cubase, you'll need to locate the **Components** directory inside your Cubase 4 installation folder.

For Nuendo, you'll need to locate the **Components** directory inside your Nuendo 3 installation folder.

For Sonar, you'll need to locate the **Shared Surfaces** directory inside your Cakewalk installation folder.

The Installer will then prompt you for confirmation. Click Install and wait for the process to end. Click Finish : you're done !

## II. HOOKING DEXTER UP

Dexter uses standard Ethernet to interface with your computer. You can connect it directly to your computer with a single, crossover Ethernet cable, or place it on a local area network via a hub or switch.

You may want to use a local area network if any of the following are true:

- You are using your computer's Ethernet port to connect to the internet, and you want to keep the connection while working with Dexter.
- You are distributing DAWs on several computers, and want Dexter to easily access any one of them.

You may want to connect Dexter directly to you computer with a single cable if any of the following are true:

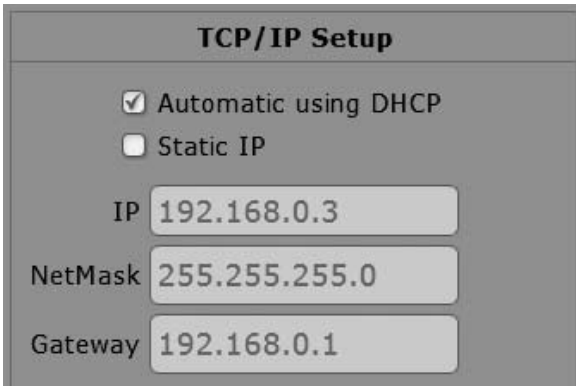
- Dexter is the only Ethernet device you have (either because you don't own any others or you connect wirelessly to other network devices).
- You want to control one single DAW on your main computer.

To get in business rapidly, we'll only cover the latter configuration in this section. It should suffice on most systems. Should it not work out of the box, or if you seek more details on OS tinkering and connection to hubs and switches, please have a look at the Appendix on Network Configuration.

The direct connection procedure basically boils down to three steps:

- Connect Dexter's Ethernet port to your computer, using the provided crossover cable.
- Make sure any firewall software is deactivated on your computer.
- Turn Dexter on and press the settings button. On the appearing panel, just select the Automatic Using DHCP mode.

Dexter will acquire an IP address without you worrying to choose one.



**TCP/IP Setup**

Automatic using DHCP  
 Static IP

IP 192.168.0.3

NetMask 255.255.255.0

Gateway 192.168.0.1

### III. SETTING UP YOUR DAW

Now that Dexter can talk with your computer, we'll move on to setting up your Digital Audio Workstation.

#### a) Logic Pro 7.2 (Mac)

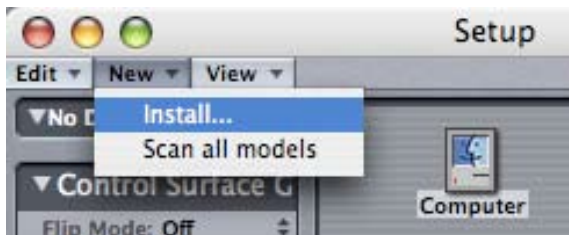
First of all, you need to make sure the JazzDaemon application is running. Double click the JazzDaemon in your Applications folder. Its icon should appear in the right hand side of your Menubar.



The JazzDaemon will convert all data that's coming from the Lemur into standard MIDI data. To do so, it creates a bunch of virtual MIDI ports, that will appear as traditional MIDI inputs in Logic. We'll make Dexter aware of the JazzDaemon presence later on. Let's move to Logic now.

In the Menu Bar, select **Logic Pro -> Preferences -> Control Surfaces -> Setup**

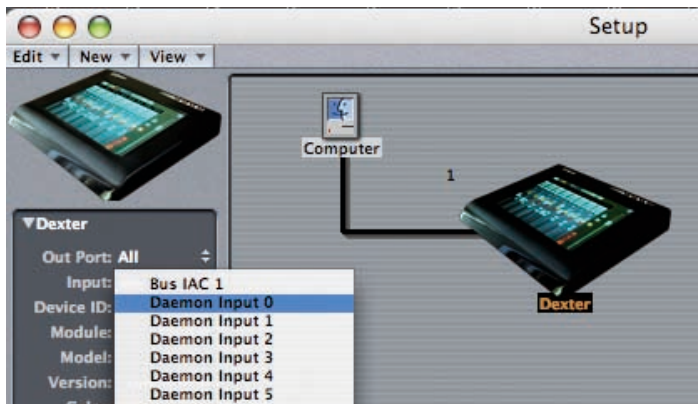
From the window that appears, you can add a Dexter instance. Choose **New -> Install**



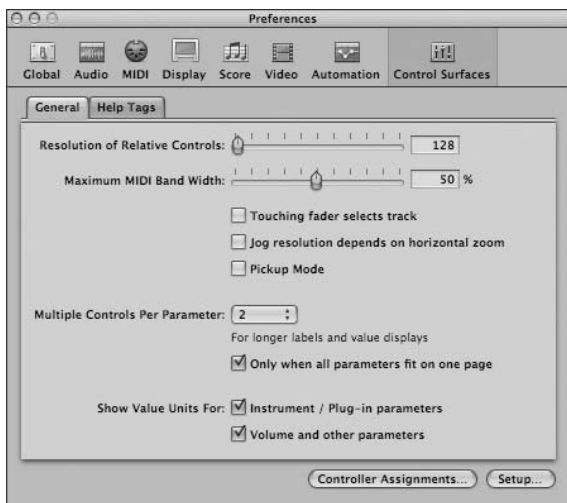
Choose JazzMutant Dexter from the list of available devices.



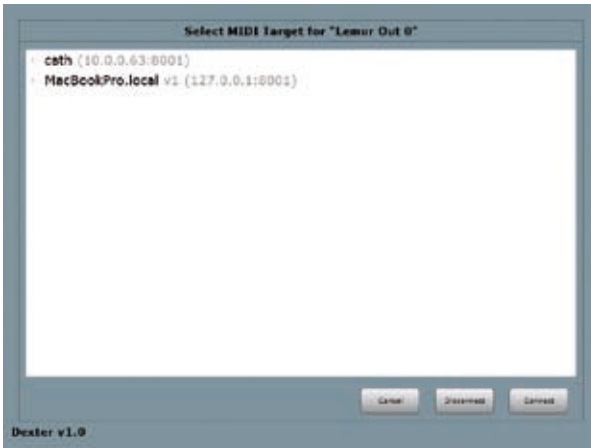
Select any virtual MIDI port as the Input port for the newly added surface. We'll choose **Daemon Input 0**, a virtual MIDI port that was created by the JazzDaemon. You'll probably not care for the rest of those virtual MIDI ports, unless you also use a Lemur with the JazzDaemon.



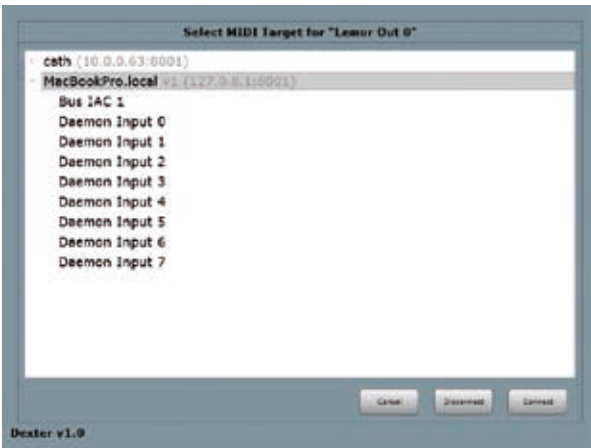
Logic has a whole bunch of control surface preferences, all of which are documented in its User Manual. There is one option you need to turn off in: **Logic Pro -> Preferences -> Control Surfaces -> Preferences**: disable the **Pickup Mode**, as Dexter only uses absolute controllers, instead of relative ones.



Dexter needs to speak with the JazzDaemon now : push Dexter's leftmost button, to display its settings page. Push the large button in the MIDI box : you must now select the computer the JazzDaemon is running on. In our case, this is MacBookPro.local.



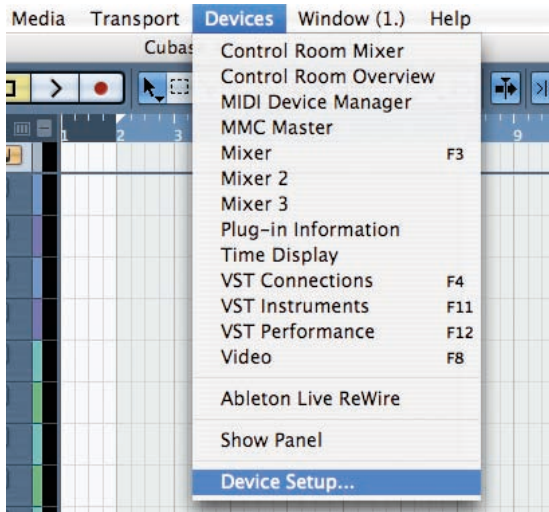
Double-tap it or press the small arrow on the left. You are now presented with all the MIDI ports attached to this computer.



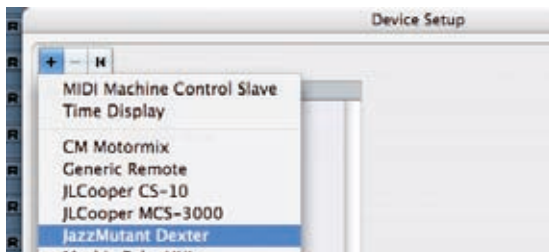
Select the virtual MIDI port you chose in Logic preferences, and hit Connect. You've setup everything that's specific to Logic, move on to the next section for the last words on conversing with a DAW !

## b) Cubase 4 (Mac and PC) and Nuendo 3 (PC)

In the **Devices** menu, select **Device Setup**.



Click the Plus sign to add a control surface. Select JazzMutant Dexter in the appearing menu.



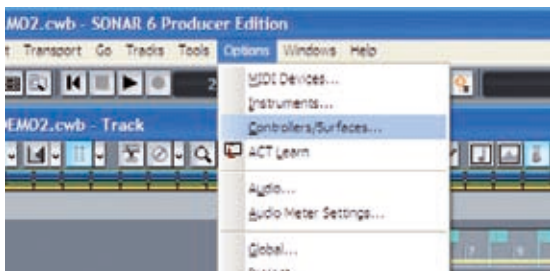
You can now see JazzMutant Dexter instantiated in the **Remote Devices** section of the Setup window. Leave the Input and Output ports to None, as Cubase/Nuendo doesn't use MIDI for communication with the Dexter.



You've setup everything that's specific to Cubase/Nuendo, move on to the next section for the last words on conversing with a Daw!

### c) Sonar (PC)

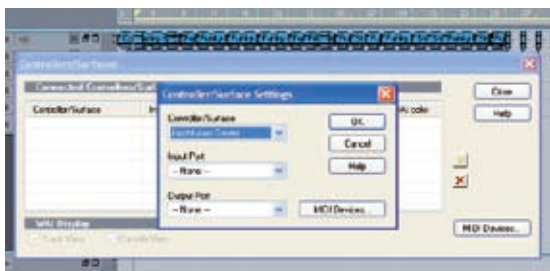
Choose **Options** -> **Controllers/Surfaces**.



Click the yellow star to add a new control surface.



Select JazzMutant Dexter in the **Controller/Surface** list. Leave the Input and Output ports to None, as Sonar doesn't use MIDI for communication with Dexter. Click OK.



JazzMutant Dexter now appear in your list of control surfaces.



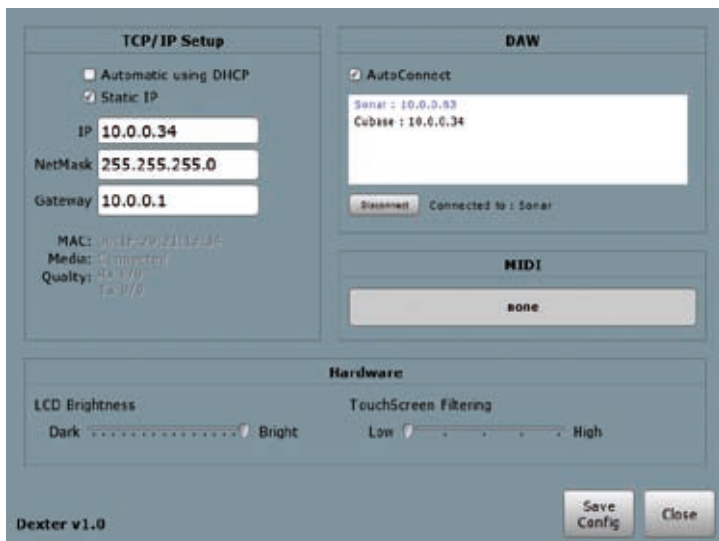
You've setup everything that's specific to Sonar, move on to the next section for the last words on DAW conversation !

## IV. GET THEM TO TALK !

Your DAW is ready to speak with Dexter. If you're using Logic, you've also learnt how to setup the JazzDaemon as an intermediary for the two to understand each other. All you need to do is associate Dexter with the DAW you want to control. This can be done automatically or manually, from Dexter itself.

Have a look at the DAW section in Dexter's settings page. The white list shows all DAW applications that were detected on the network (which amount to one single computer if you're using direct connection). When the **AutoConnect** checkbox is enabled, Dexter will automatically connect to the first detected DAW. The current target DAW appears in blue, and its name is displayed at the right of **Connected to**. If you'd rather select the target application manually, you'll want to disable the **AutoConnect** feature. In that case, select the application you want to control and hit the **Connect** button. This button turns into a **Disconnect** button when your current target application is selected.





You're now connected ! Hit the **Save Config** button to store the **AutoConnect** and JazzDaemon settings, and **Close** to go back to Dexter's user interface.

## V. TOUCHING DEXTER

The multitouch technology featured on Dexter combines high resolution with high sensitivity. Though you'll find caressing Dexter a very natural thing to do, the following guidelines will make its manipulation even more comfortable.

You don't have to use excessive force to control the widgets on the screen. Extremely light touch, on the other hand, won't work either.

The best response will be achieved by making the contact area between your fingers and Dexter's surface as small as possible. Use the tips of your fingers rather than the flat underside to achieve maximum precision. Fingernails are even better, have no fear of scratching the surface : Dexter is rocksolid and built to last.

Now is the time to play, or read Dexter's manual to learn more about the layout and functions of all the widgets. Enjoy !



